



AUBO i3

Technical Specifications & Data Sheet

6 Axis
3kg Payload
625mm Reach

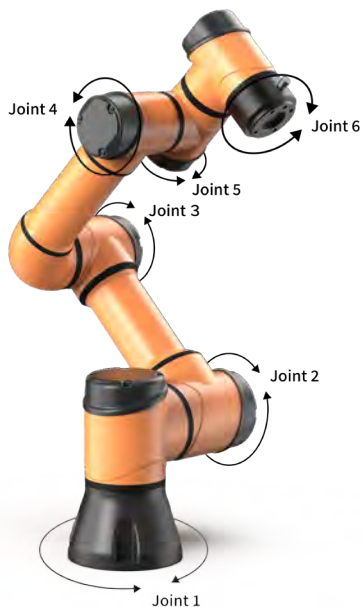
Your AUBO Distributor



Partners in Productivity

icrservices.com
(586) 582-1500





SPECIFICATIONS

Payload	3 kg
Reach	625 mm
Weight	16 kg
Mounting Base Footprint	Ø140 mm
Avg. Power Consumption	150 W
Peak Power Consumption	1000 W
Operating Temperature	0-50 °C
Humidity	90% Relative Humidity (No Condensation)

CONTROL BOX SPECIFICATIONS

Size (L x W x H)	390mm x 370mm x 265mm
Weight	15 kg
Robot Cable Length (Customizable)	5 m
Teach Pendant Cable Length	4 m
Power Supply Cable Length	5 m
Communication Protocols	Ethernet TCP/IP, ModBus-RTU/TCP, Profinet
I/O Ports	
Digital Input	16 (User) / 16 (Safety)
Digital Output	16 (User) / 16 (Safety)
Analog Input	4
Analog Output	4
I/O Power Supply	24V 3A
Power Supply Requirements	100-240VAC, 50-60Hz
Open Source Development Support	SDKs in C/C++/C#/Lua/Python, ROS, Plug-in Support

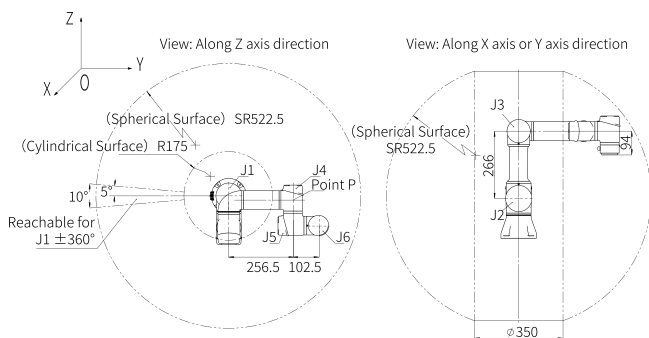
MOVEMENT

Repeatability (ISO 9283)	±0.02 mm	
Tool Velocity	≤1.9 m/s	
Axis Movement	Working Range	Maximum Speed
J1 Base	±360°	178°/s
J2 Shoulder	±360°	178°/s
J3 Elbow	±360°	178°/s
J4 Wrist	±360°	237°/s
J5 Wrist	±360°	237°/s
J6 Wrist	±360°	237°/s

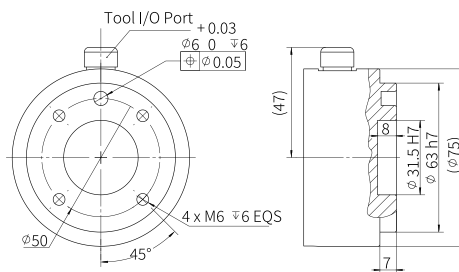
FEATURES

Mounting Orientation	Any Orientation	
IP Classification	IP 54	
ISO 1644-1 Clean Room Level	Class 5	
Tool I/O Ports		
Digital Input	4 (Customizable)	
Digital Output	4 (Customizable)	
Analog Input	2	
Analog Output	-	
I/O Power Supply		
Output Voltage	0V/12V/24V	
Output Current	0.8A	

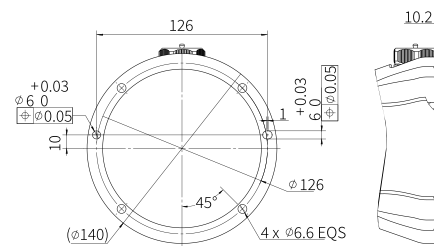
The AUBO i3 is a compact and lightweight collaborative robot designed to propel your organization towards progress. Built with a focus on efficiency, the AUBO i3 shines in tight clearances and small workspaces, whether on a benchtop or inside machinery. Despite its small size, it boasts full degree rotation on all wrist joints, enabling precise and repeated movements for light assembly tasks.



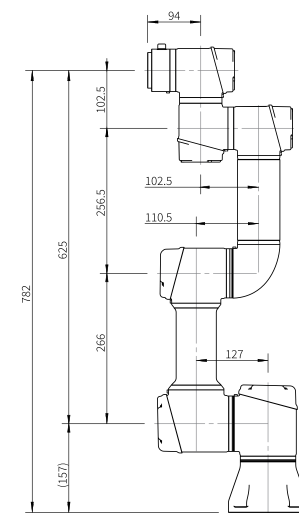
WORKSPACE DIMENSIONS



END FLANGE DIMENSIONS



ROBOT BASE TOP VIEW



PRODUCT DIMENSIONS